

# NSW Capability Statement



Development &  
Infrastructure  
Consultants

---

[beveridgewilliams.com.au](http://beveridgewilliams.com.au)

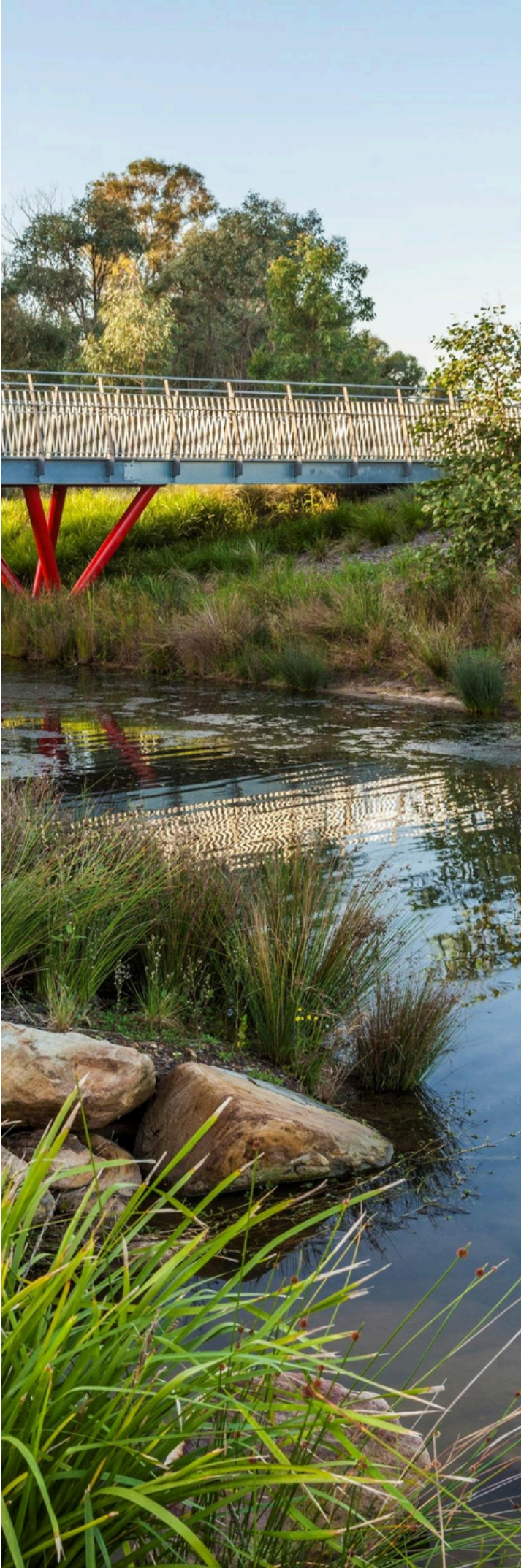


# TABLE OF CONTENTS

ABOUT US	2
AWARDS	3
PROJECT LIFECYCLE	4
OUR SERVICES	5
TECHNOLOGY	8
YOUR NSW TEAM	9
OUR PROJECTS	11

## ACKNOWLEDGMENT OF COUNTRY

Beveridge Williams acknowledges the Traditional Custodians of the land on which we live/work and recognise their continuing connection to Country. We pay our respect to Elders past, present and emerging and extend that respect to all Aboriginal and Torres Strait Islander peoples.







Beveridge Williams is an award-winning land development and infrastructure consultancy.

For over 60 years Beveridge Williams has planned, designed and engineered landscapes - transforming land into legacies for our local communities.

With decades of design excellence and a convenient 'one-stop shop' Beveridge Williams offers a suite of services to meet the evolving needs of our development and infrastructure clients in both the public and private sectors.

Est.  
**1961**

**430+**  
STAFF



**100%**  
STAFF OWNED

## YOUR LOCAL NSW PARTNER

Over recent years, our team in NSW has grown to over 130 professionals who consistently deliver exceptional service to our clients. Our clients consistently praise us for being easy to work with and building strong relationships based on mutual respect, understanding, and responsiveness to their needs.

**Knowledge & Experience** – Our team brings extensive local knowledge and experience to handle complex, multi-faceted projects.

**Multi-disciplinary Approach** - Our multi-disciplinary service offering allows us to deliver comprehensive solutions that meet the diverse needs of our clients.

**Clear & Proactive Communication** – We pride ourselves on our communication. We maintain open lines of communication throughout the project, so you always know how your project is progressing.

Our goal is to deliver consulting excellence that leaves a lasting positive impact on our clients, communities, and the environment.





## OUR AWARDS

Beveridge Williams is proud to have received numerous awards throughout the years, reinforcing our commitment to consulting excellence.

Some of the more recent awards include:

- 2025 NSW Excellence in Surveying & Spatial Information Awards - Surveying Project Management - Harrington Grove
- 2025 VIC Excellence in Surveying & Spatial Information - Urban Cadastral Surveying & Land Titling Award - Webb St Level Crossing Removal project
- 2025 Excellence in Surveying & Spatial Information - Organisation of the Year Award
- 2024 Excellence in Surveying & Spatial Information Awards - Rural Cadastral Surveying Award and Winner Urban Cadastral & Land Titling Award
- 2024 Surveyors Australia National (Large) Consulting Excellence Award
- 2024 AILA SA/NT, The NT Award for Excellence for Tourism and the NT Achievement Award for Baruwei Lookout
- 2023 NSW Excellence in Surveying and Spatial Information - Professional Organisation of the Year
- 2022 AILA National Landscape Architecture Award for Urban Design – Cooling Darwin project
- 2001 AILA National Landscape Architecture Award for Cultural Heritage - Fairbridge Children's Park
- 2021 NSW Excellence in Surveying and Spatial Information - Urban Cadastral Award - Lidcombe Hotel
- 2021 NSW Excellence in Surveying and Spatial Information Surveying Project Management Award – Shell Cove
- 2021 National Surveying Consultancy Excellence Awards in the National Consultancy category.
- 2021 UDIA Award for Excellence for Best Master Planned Community - Waterford Rise Estate, Victoria
- 2020 UDIA Award for Excellence for Best Residential Development – Waterford Rise Estate, Victoria
- 2020 Urban Development Institute of Australia (UDIA) Great Place Award – Mandalay by Newland Developers
- 2019 Urban Development Institute Australia (UDIA) Award for Excellence, Best Master Planned Community – Mandalay by Newland Developers
- 2019 UDIA (NT) Awards for Consulting Excellence Award
- 2018 UDIA Award for Excellence (Urban Development Institute of Australia VIC) Awarded to Casey Growth Area Commendation for Consulting Excellence



# PROJECT LIFECYCLE

Our multi-disciplinary services span the entire project lifecycle.

We partner with you every step of the way.

01

**DUE DILIGENCE**

- ✓ Site Constraints
- ✓ Planning Controls
- ✓ Approval Process
- ✓ Yield
- ✓ Servicing
- ✓ Timing
- ✓ Cost Estimates
- ✓ Subsurface Utility Investigations
- ✓ Detail Survey



02

**URBAN DESIGN DESIGN, TOWN PLANNING & LANDSCAPE ARCHITECTURE**

**CONCEPT DESIGN**

- ✓ Authority Consultation
- ✓ Servicing Strategy
- ✓ Community Engagement
- ✓ Design Development
- ✓ Consultant Reports
- ✓ Development Application
- ✓ Landscape Architecture

**DEVELOPMENT APPROVAL**

- ✓ Rezoning
- ✓ Development Application (DA)
- ✓ Complying Development Certificate (CDC)



Revisions

03

**CONSTRUCTION APPROVAL**

- ✓ Detailed Design
- ✓ Consultant Reports
- ✓ Cost Analysis
- ✓ Servicing Design Application

**CONSTRUCTION DOCUMENTATION**

- ✓ Water
- ✓ Electrical
- ✓ Gas
- ✓ Roads
- ✓ Lighting
- ✓ Landscape
- ✓ Noise
- ✓ Geology
- ✓ Geotech
- ✓ Traffic
- ✓ Structural
- ✓ Communications



Revisions

04

**CONSTRUCTION**

- ✓ Tenders
- ✓ Review Engagement
- ✓ Commencement
- ✓ Superintendency
- ✓ RFI/Advice
- ✓ Council/Authority Management
- ✓ Inspections
- ✓ Surveying Setout & WAE



05

**COMPLIANCE/SUBDIVISION**

- ✓ Govt. Approvals
- ✓ Authority Approvals
- ✓ Contributions
- ✓ Subdivision Consent
- ✓ LRS Lodgement & Title Issue
- ✓ Housing Applications



## OUR SERVICES

We deliver survey, planning, engineering and advisory services to the land development industry across the full project lifecycle.

### CIVIL ENGINEERING

Our civil engineers are all over (and under) your development project, from road, drainage and utilities design to onsite construction management and everything in between.

Our civil services include:

- Preliminary Development Cost Estimate
- Concept Civil Design for Development Application
- Civil Design including Roads and Drainage Design for Subdivision Works Certificate and Roads Act Works Approval
- Construction –Tender Management, Contract Administration and Superintendency
- Vehicle Swept Path Modelling
- 3D Design Surface Modelling
- Retaining Wall Concept Design (not including Structural Design)
- Bulk Earthworks Plans
- Waste Management Plans
- Erosion and Sediment Control Plans
- Water and Sewer Servicing Strategy for Development Application
- Water and Sewer Reticulation Design
- Schedule of Items and Estimated Quantities
- Expert witness, attend joint conferencing and/or Court as required.

### URBAN DESIGN

Our services include:

- Feasibility plans for new subdivisions
- Indicative concept plans
- Detailed development plans
- Precinct structure plan submissions
- Land use plans
- Strategic planning and design documents.



### TOWN PLANNING

We provide strategic and statutory Town Planning services including:

- Town Planning and Infrastructure Servicing Due Diligence Report
- Development Application including the preparation a Statement of Environmental Effects
- Pre-Lodgement and Post Approval Project Management
- LEP Variation Report
- Bushfire Hazard Assessment
- Crime Prevention Through Environmental Design Report
- Rezoning Applications
- Modification Applications
- Submission Report for Support and Objection
- Designated Development Applications including Environmental Impact Statements
- Part 5 Applications including Review of Environmental Factors.

### SURVEY

We provide general, infrastructure and development survey services including:

- Cadastral surveys
- Earth movement and structure surveillance surveys
- Lease area and GFA survey
- Community Subdivision
- Land and building subdivisions (stratum and strata)
- Title boundary re-establishment surveys
- Crown lease surveys
- Construction set out
- Land acquisition plans for government authorities
- 3D modelling and laser scans
- Greenfield estate surveying services
- Detail and level surveys.



## LANDSCAPE ARCHITECTURE

In 2022 CLOUSTON Associates joined the Beveridge Williams team bringing together two powerhouses of landscape and design. Our landscape architecture service capability includes:

- Site investigation and analysis plans
- Landscape plans for town planning applications
- Public open space design
- Wetland planting and waterway revegetation
- Native vegetation offset plans and reports
- Landscape contract documentation and administration
- Visual Impact Assessments
- Preparation of landscape guideline and maintenance plans.

Our team is committed to the Connecting to Country principles and adhere to the State Government framework and incorporate the principles within our landscape projects.



## WATER RESOURCE ENGINEERING

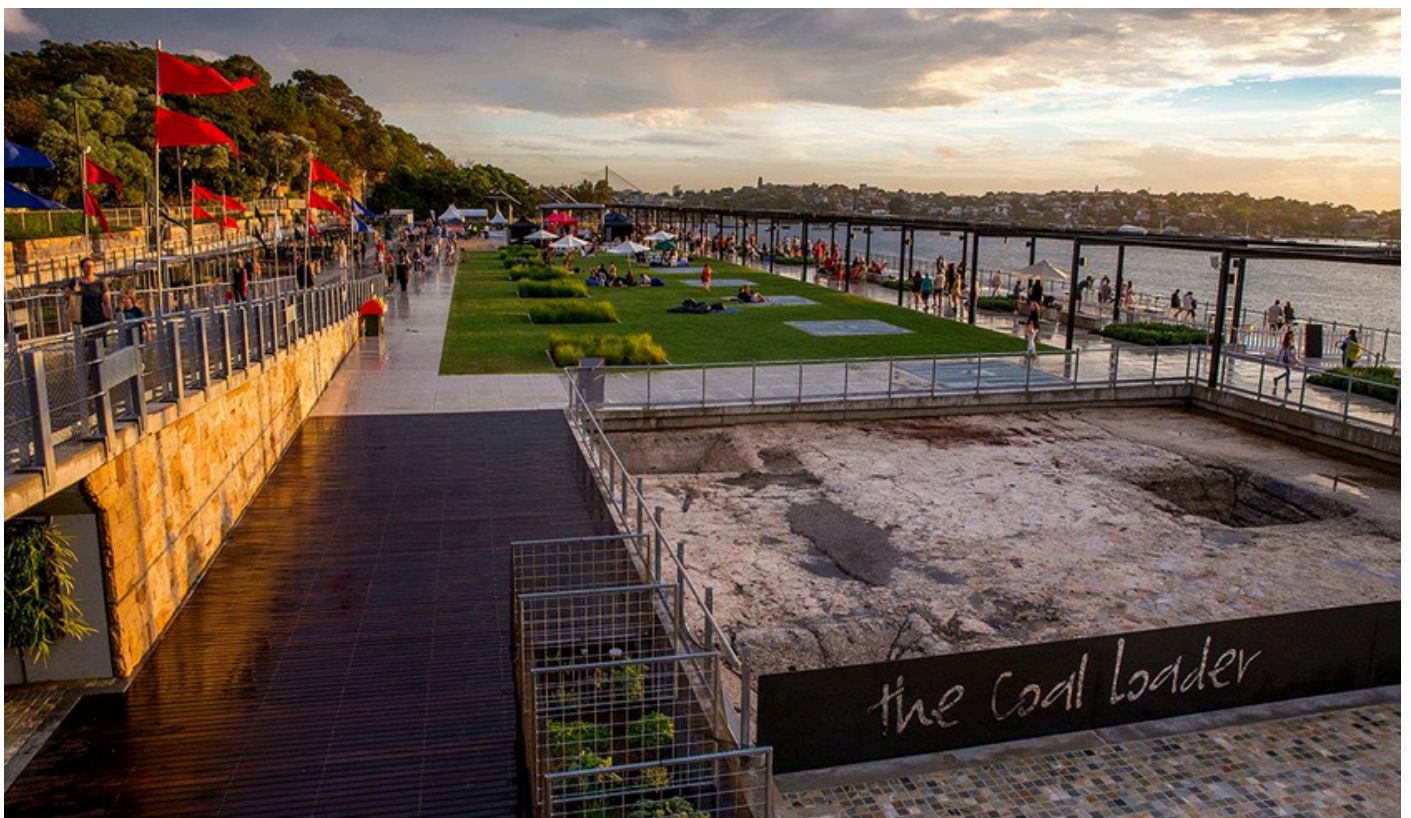
We offer solutions that tackle water challenges in land and infrastructure development, while also enhancing your project with valuable natural assets for the benefit of stakeholders and the community.

Our water resources services include:

- Water Sensitive Urban Design
- Integrated Water Management Strategies
- Stormwater Management Strategies
- Flood modelling
- Erosion control works
- Hydrology and hydraulic assessments.

## PROJECT MANAGEMENT

Our project managers are fast, reliable communicators fully focused on your needs, managing timelines, budgets, and regulations, while unlocking the full potential of your investment through attentive and efficient management.





## SUBSURFACE UTILITY INVESTIGATIONS

We have a team of qualified and experienced Before You Dig Australia accredited utility locators and surveyors who are experts at not only investigating and marking underground utilities but translating utility information into engineering grade survey data.

Our services include:

- Subsurface Utility Locating
- Electromagnetic Locating
- Ground Penetrating Radar (GPR)
- Utility Survey and Mapping
- Georeferenced Aerial Survey plans (if required)
- 12d/DWG CAD models
- BIM Modelling
- Field reports including Pothole/Trench, Pit and Drainage Interactive PDFs
- SUI Data Spreadsheets
- Non-Destructive Evacuation
- CCTV and Drainage Investigations.

## WATER SERVICES COORDINATION

BW offers a range of services carried out by fully accredited Sydney Water Services Coordinators including:

- Section 73 Compliance Certificates
- Sydney Water Building Plan Approval
- Water and Sewer Design, Project Management & Supervision
- Water and Sewer Adjustments / Extensions / Deviations & Amplifications
- Sewer catchment designs and catchment analysis
- Pressure Sewerage Service Reticulation Extension / Adjustments
- Strategic planning and development servicing strategies
- Building Over / Adjacent to Sydney Water's asset applications
- Notice of Requirements (NOR's)
- Service Protection Reports (Sewer Peg out Reports)
- Concrete Encasement Inspections and Pier Inspections
- Sydney Water service prints (Hydra prints and Sewerage Service Diagrams).





# TECHNOLOGY

## THE LATEST TECHNOLOGY FOR QUALITY OUTCOMES

At Beveridge Williams, we believe it is important to bring the right technology, as well as the right people, to your project.

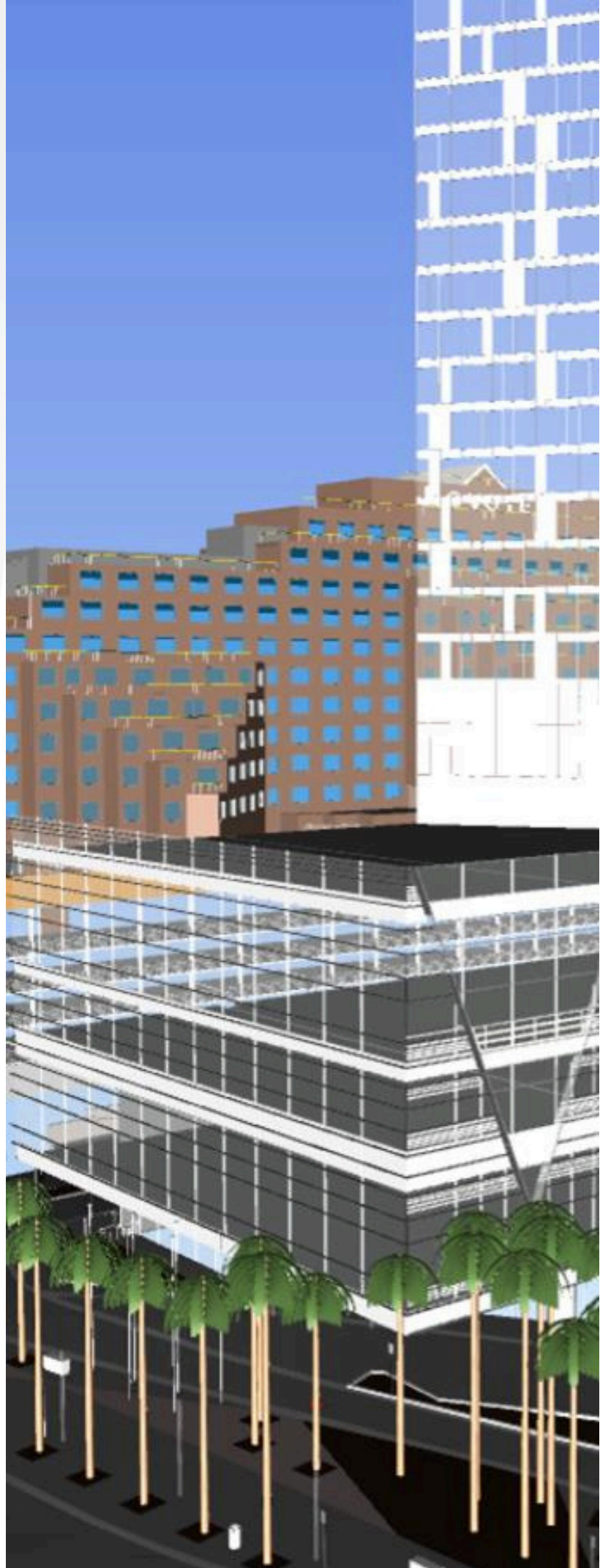
Technology is evolving quickly, and the Digital Twin is becoming more essential for design, planning, approval, and marketing purposes.

## SEEING ABOVE AND BELOW YOUR PROJECT

Beveridge Williams has developed systems and procedures to deliver a fully integrated and attribute rich Revit BIM product.

This product moves beyond point cloud and object modelling, to fully integrate attribute elements such as:

- Land Parcels in 3D form, with relevant title information
- Easements in 3D form, including beneficiary, etc.
- 3D Building Design Envelope (BDE)
- Sub-Surface utilities including attributed elements such as:
  - Asset Owner
  - Asset size, arrangement
  - Asset material
  - Quality Level classification
  - Survey date
- Structural modelling from historical records





## YOUR NSW TEAM

With a deep understanding of the local landscape, regulations, and industry nuances, our team is well-equipped to tackle a wide range of projects. Drawing from their diverse backgrounds in surveying, planning, engineering, landscape and advisory fields, our experts collaborate seamlessly to provide tailored solutions for each client.

Combining expertise with a commitment to excellence, our local team is your trusted partner for successful and sustainable project outcomes.



**KELLIE HASSAB**  
**Director/Manager NSW**

Kellie Hassab is a qualified Surveyor and Registered Planner with a postgraduate qualification in Environmental Studies. As NSW Manager and Director of Beveridge Williams Kellie oversees the NSW team. Kellie's background in surveying and town planning, enables her to interface between departments while engaging in managerial responsibilities, such as strategic planning, team coordination, and client relationship management. Kellie focuses on nurturing a supportive workplace, to enhance the team's capabilities and contribute to the overall success of Beveridge Williams in NSW.



**PETER BOORER**  
**Manager NSW Surveying**

Peter, a Registered Surveyor who joined Beveridge Williams in 2022, manages the NSW surveying division. He specialises in complex titling and Subdivision solutions to ensure our clients have the very best outcomes for their projects. Peter is active within the industry and has experience working on the cadastral survey components of large infrastructure projects.



**MARK ANDREW**  
**Principal Registered Surveyor**

Mark is a Senior Registered Land Surveyor and NSW Survey Manager with extensive expertise in providing complex title solutions including 3D building and land subdivisions. Mark leads our team of surveyors. He provides expert witness services as surveyor in the Supreme Court and Land and Environment Court. Mark is an active contributor to the surveying profession dedicating many hours to strengthening and enhancing the standing of Surveying in dealing with clients, government and the wider community.





**TONY COX**  
**Manager NSW & NT Landscape Architecture**

Tony has been a practicing landscape architect since 1986. He has played a central role in a diverse range of planning, masterplanning, recreation, tourism and conservation projects across northern and central Australia. Tony's expertise lies in his ability to draw out the core principles and distinguishing characteristics of any project and embed these in the planning and design outcomes. An appreciation of natural systems and networks and how these relate to humans within the environment can lead to positive outcomes in the areas of community, health and individual well being.



**PAUL WALLIS**  
**National Manager SUI**

Paul is the National Manager of our SUI team, is a DBYD Accredited Utility Locator and a well known leader in the SUI industry. Paul manages utility infrastructure investigation, utility surveys, drainage investigation surveys, and clash detection analysis. Paul is an exceptional communicator and problem solver and works collaboratively with our public and private sector clients, as well as our internal BW teams.



**ANTHONY OLIVER**  
**Project Manager/Registered Land Surveyor**

Anthony is a Registered Land Surveyor and has over 30 years experience in the infrastructure, land and property development industry. Anthony is responsible for managing land development projects, including collaborating across multiple sectors and disciplines to assist our clients in achieving integrated and cost-effective solutions.



**SHANE GRAY**  
**Manager NSW Engineering**

Shane is a Civil Engineer and Project Manager with over 18 years' experience, who has worked in Australia and Canada and is a Western Sydney local. Shane is an excellent communicator with an outstanding client service focus. His engineering and project management expertise provides insight into the development process which adds value to our clients and projects.



**SAM KELLY**  
**Manager Water Resources Engineering (VIC/NSW)**

Sam is a Chartered Professional Engineer who leads Beveridge Williams' Water Resource team. Sam specialises in Urban Stormwater Management, Flooding and Water Quality Management. He is highly experienced in water cycle management advice, floodplain management and stormwater asset design.

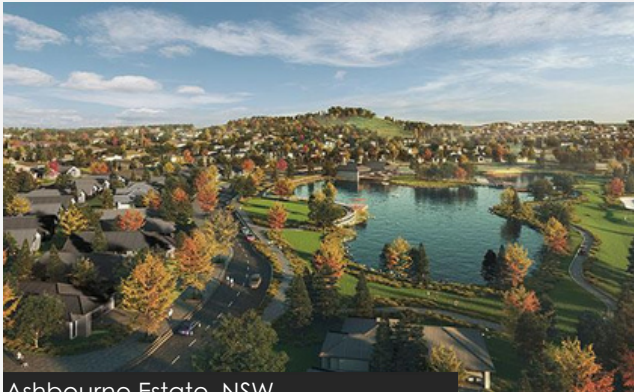


**MATTHEW PARKER**  
**Manager WSC Western Sydney**

Matthew is a Licensed Water Service Coordinator who has worked in the NSW Surveying and Water Services industry, including Sydney Water, for over 30 years. Matt is responsible for the coordination of all aspects of water service design within the firm and manages the BW WSC team.



## OUR PROJECTS



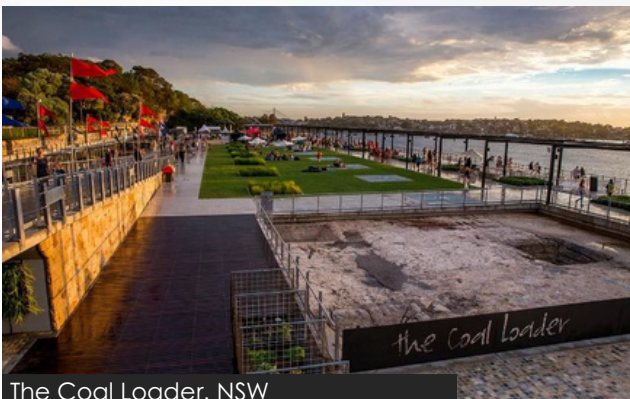
Ashbourne Estate, NSW

Services: Survey, Civil Engineering, Water Services  
Co-ordination, Subsurface Utility Investigation



Warnervale Town Centre, NSW

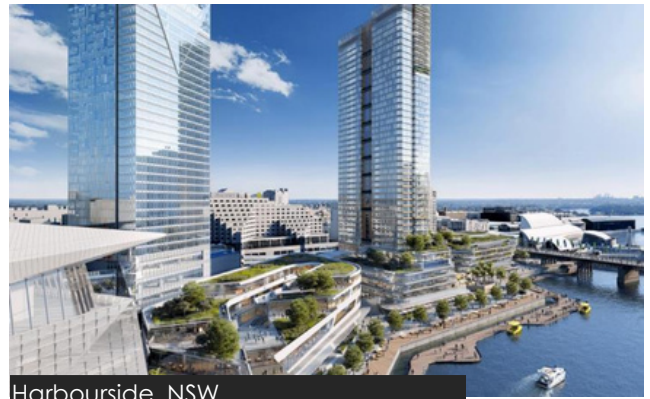
Services: Planning, Surveying, Project Management,  
Civil Engineering



The Coal Loader, NSW

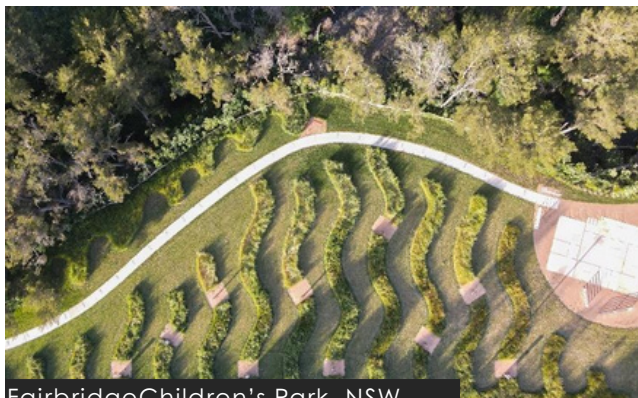
Winner: 2022 AILA National Landscape Architecture  
Award for Urban Design

Services: Landscape Architecture



Harbourside, NSW

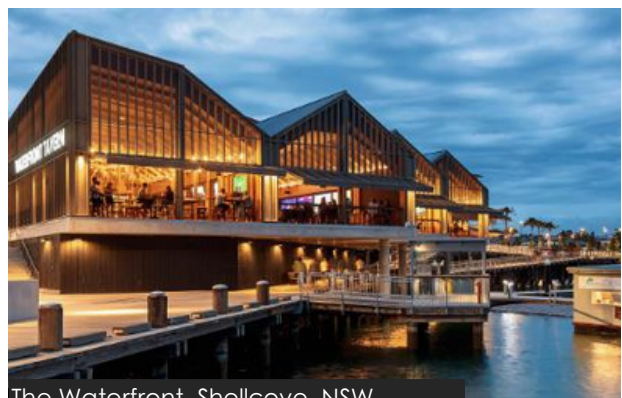
Services: Land Titling, Revit Modelling, SUI and  
Surveying



Fairbridge Children's Park, NSW

Winner: 2021 AILA National Landscape Architecture  
Award for Cultural Heritage

Services: Landscape Architecture



The Waterfront, Shellcove, NSW

Winner: 2021 NSW Excellence in Surveying & Spatial  
Information Awards

Services: Survey, Project Management



## OUR PROJECTS



Harrington Grove, NSW

Winner: 2025 NSW EISSI – Survey Project Management  
Services: Survey, Project Management, SUI, CAD/GIS Integration



Muswellbrook Bypass, NSW

Winner: 2024 NSW EISSI Awards - Rural Cadastral Surveying & Land Titling  
Services: Water Resource Engineering, Planning, Survey, Engineering Design and Project Management



Catherine Park Estate, NSW

Winner: 2023 UDIA National Excellence in Residential Subdivision  
Services: Survey, Land Titling and WSC



Oran Park Town, NSW

Services: Survey, Land Titling, WSC and Strata Certification



Edmondson Park, NSW

Services: Planning, Survey, Land Titling, Strata Certification



Georges Cove, Moore Park, NSW

Services: Project Management, Survey, Engineering, WSC



## OUR PROJECTS



Birling Estate, NSW

Services: Project Management



Bellbird, NSW

Services: Water Resource Engineering, Planning, Survey, Engineering Design and Project Management





**Beveridge Williams**



**CLOUSTON** associates

## FOLLOW US



Beveridge-Williams



beveridgewilliams

Our third-party certification includes

AS/NZS ISO 9001

Quality Management

AS/NZS 45001

Occupational Health & Safety Management

AS/NZS ISO 14001

Environmental Management



## LOCATED NATIONALLY

### Sydney

65-69 Kent Street  
Sydney NSW 2000  
(02) 9283 6677  
sydney@bevwill.com.au

### Western Sydney

Suite 4.05 and 4.06  
3 Fordham Way  
Oran Park NSW 2570  
(02) 4625 5055  
westernsydney@bevwill.com.au

### Central Coast

Unit 4  
5 Colony Close  
Tuggerah NSW 2259  
(02) 4351 2233  
centralcoast@bevwill.com.au

### Wollongong

University of Wollongong  
Innovation Campus  
Squires Way  
North Wollongong NSW 2500  
wollongong@bevwill.com.au

### Melbourne

Ballarat  
Geelong  
Sale  
Traralgon  
Wonthaggi  
Leongatha  
Warragul

Darwin

[beveridgewilliams.com.au](http://beveridgewilliams.com.au)