



# Capability Statement

## Beveridge Williams



Development &  
Infrastructure  
Consultants

[beveridgewilliams.com.au](http://beveridgewilliams.com.au)



## TABLE OF CONTENTS

About Us	03
The Evolution of Beveridge Williams	05
Our Approach	06
Project Lifecycle	07
Our Awards	08
Commitment to Safety	09
Our Role in Society	11
Our Commitment to Reconciliation	13
Technology & Innovation	14
Our Services	15
Urban Design	15
Town Planning	16
Design Assessment Services	17
Landscape Architecture	18
Surveying	20
Subsurface Utility Investigation	21
Civil Engineering	22
Project Management	23
Infrastructure Engineering	24
Traffic & Transport Engineering	25
Water Resource Engineering	26
Environmental Consulting	28
Water Service Coordination	29
Renewable Energy & Supporting Networks	30
Infrastructure	
Our Projects	32
Our Leaders	37
Affiliations	41

### ACKNOWLEDGMENT OF COUNTRY

*Beveridge Williams acknowledges the traditional owners of the lands on which we work. We pay our respects to the Elders, past and present.*



## ABOUT US

Beveridge Williams, an employee-owned company, was established in 1961 and has steadily grown to become one of the largest multi-disciplinary engineering, infrastructure and land development consultancies in Australia



Est.  
**1961**

**430+**  
STAFF

**100%**  
STAFF OWNED

From our early years as a small local surveying company in regional Victoria, Beveridge Williams has undergone significant growth in terms of size, service offering and geographical reach.

Our team is comprised of industry leading experts who plan, design, manage and deliver projects and programs to the highest standards. Today we're a strong network of over 430 professionals working together across multiple states, supporting a diverse range of clients with integrated development services that always deliver inspirational outcomes.

From a local regional Victorian survey company in 1961 to now operating in four states with an expansive suite of services.

We are proud that many of our employees have been with Beveridge Williams for most of their careers, bringing their local expertise and knowledge to the team and our clients. This delivers consistent, streamlined account management for the benefit of our clients.

Our service offering continues to evolve to meet the needs of clients in both the public and private sectors.



Many employees have been with Beveridge Williams for decades delivering expertise and knowledge to countless projects.

We've delivered thousands of urban and regional projects of every size across the industry spectrum, by understanding the local challenges and opportunities each project brings.

Our awards and broad client base are testament to our dedication as we strive to be leaders in all our endeavours.

Our strong involvement in the development and infrastructure industry has forged a considerable network of well-developed relationships with key stakeholders including developers, authorities, government agencies and other organisations.

We are proud of the communities we have designed, planned, surveyed and engineered.

With offices across Victoria, New South Wales and in the city of Darwin, our services include:

- Civil Engineering
- Surveying
- Project Management
- Town Planning
- Urban Design
- Traffic and Transport Engineering
- Landscape Architecture
- Environmental Assessments
- Subsurface Utility Investigation
- Design Approvals
- Water Services Coordination (NSW)

The geographical diversity of our offices creates a flexible workforce that enables the dedication of necessary resources as project demand requires.

Our multi-disciplinary structure enables us to provide coordinated development solutions from early feasibility and due diligence through approvals, subdivision and project delivery.

By bringing together expertise across our suite of services within one coordinated business, BW provides clients with seamless collaboration between disciplines and fully integrated project delivery outcomes.

Our integrated approach allows us to proactively identify project risks early, coordinate consultant inputs efficiently and maintain clear communication with councils, utility authorities, stakeholders and approval agencies throughout the project lifecycle.

**Knowledge & Experience** – Our team brings extensive local knowledge and experience to handle complex, multi-faceted projects.

**Multi-disciplinary Approach** – Our multi-disciplinary service offering allows us to deliver comprehensive solutions that meet the diverse needs of our clients.

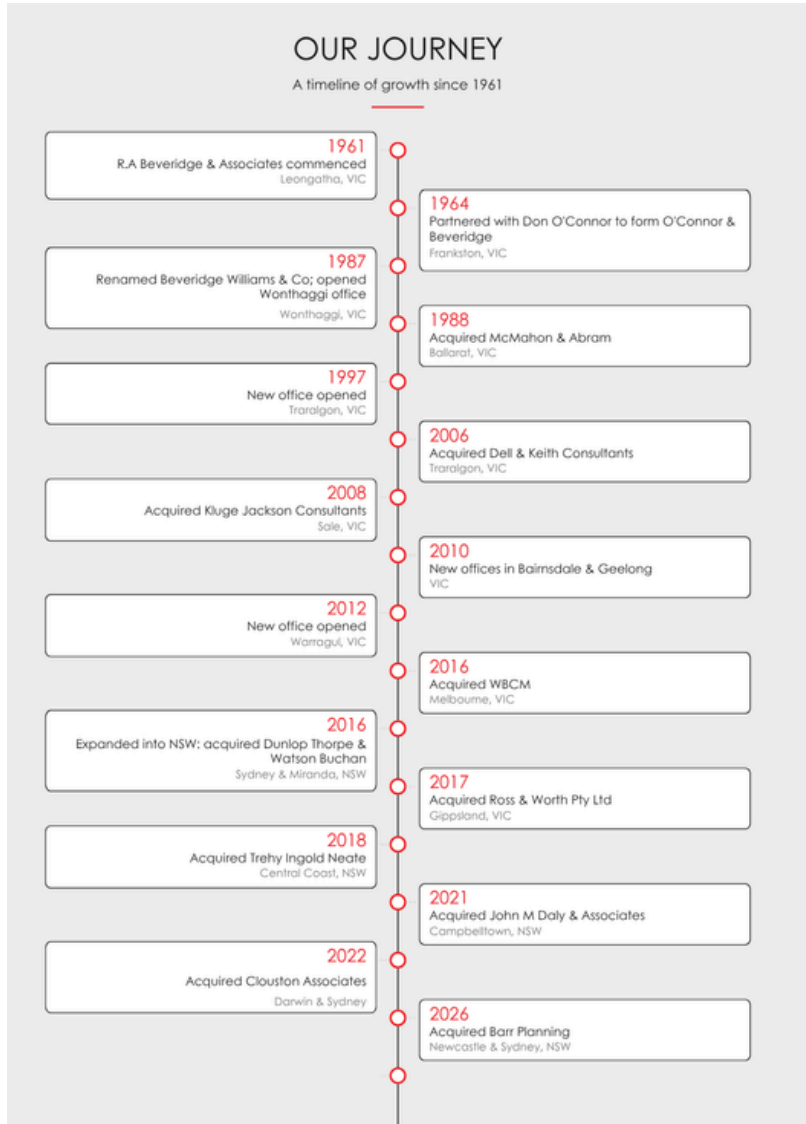
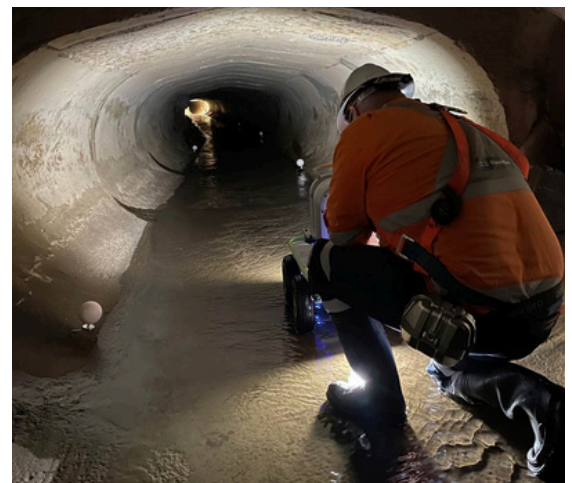
**Clear & Proactive Communication** – We pride ourselves on our communication. We maintain open lines of communication throughout the project, so you always know how your project is progressing.

Our goal is to deliver consulting excellence that leaves a lasting positive impact on our clients, communities, and the environment.

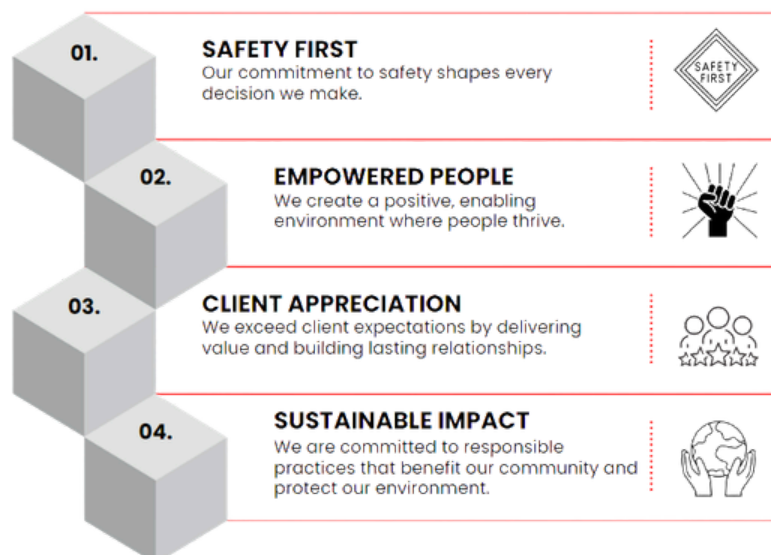


# THE EVOLUTION OF BEVERIDGE WILLIAMS

From our early years as a small local surveying company in regional Victoria, Beveridge Williams has undergone significant growth in terms of size, service offering and geographical reach



Striving for **consulting excellence**, our values are at the heart of everything we do



# OUR APPROACH

At Beveridge Williams, consulting excellence sits at the heart of our operations, with our size, strength and flexibility enables us to assign the right resources, skill sets and local expertise to suit any brief, budget and timeline

Our Vision is to deliver a quality development service which meets the evolving needs of our clients. We strive to do this in a culture of effective communication and continuous improvement that provides staff with the opportunity to grow and develop.

## WHY US?

### Clear & Proactive Communication

We pride ourselves on our communication. We know that clear and effective communication is vital for strong partnerships and successful projects. Our team is skilled in active listening, ensuring we understand your requirements and objectives. We maintain open lines of communication throughout the project, giving regular updates and promptly addressing any concerns. Our transparent and collaborative approach builds strong client relationships, enabling us to deliver tailored solutions that deliver value for our clients.

### Multiple-discipline team advantage

Our multi-disciplinary team collaborates seamlessly and leverages its diverse skill sets to develop innovative, tailored solutions that address complex challenges. This integrated approach results in improved efficiency, streamlined processes, and ultimately, enhanced value for our clients. Whether it's combining engineering expertise with design aesthetics or strategic consulting with project management, our multi-disciplinary service offering allows us to deliver comprehensive solutions that meet the diverse needs of our clients.

### Expertise you can count on

The strength of our multi-disciplinary team lies in our depth of knowledge and expertise. For over 65 years, we have forged strong relationships with key stakeholders and know the processes well. We have the breadth and depth of expertise needed to address the most challenging projects. Our multi-disciplinary team stays abreast of the latest advancements in their fields, ensuring that our solutions are backed by the most up-to-date knowledge, technology and best practices. With our diverse skill set and collective expertise, we are well-equipped to handle complex, multi-faceted projects and deliver outstanding results.



#### OUR VALUES DRIVE HOW WE DO BUSINESS.

##### SAFETY FIRST

Our commitment to safety shapes every decision we make.

##### EMPOWERED PEOPLE

We create a positive, enabling environment where people thrive.

##### CLIENT APPRECIATION

We exceed client expectations by delivering value and building lasting relationships.

##### SUSTAINABLE IMPACT

We are committed to responsible practices that benefit our community and protect our environment.

# PROJECT LIFECYCLE

Our multi-disciplinary services span the entire project lifecycle.

We partner with you every step of the way.

**01**

## DUE DILIGENCE

- ✓ Site Constraints
- ✓ Planning Controls
- ✓ Approval Process and Strategy
- ✓ Yield Estimates
- ✓ Servicing Summary
- ✓ Timing
- ✓ Cost Estimates
- ✓ Subsurface Utility Investigations
- ✓ Detail Survey



Lorem ipsum

**02**

## URBAN DESIGN, TOWN PLANNING & LANDSCAPE ARCHITECTURE

### CONCEPT DESIGN

- ✓ Authority Consultation
- ✓ Servicing Strategy
- ✓ Community Engagement
- ✓ Design Development
- ✓ Consultant Reports
- ✓ Development Application
- ✓ Landscape Master Plan

### DEVELOPMENT APPROVAL

- ✓ Rezoning
- ✓ Development Application (DA)
- ✓ Complying Development Certificate (CDC)



**03**

## CONSTRUCTION APPROVAL

- ✓ Detailed Design
- ✓ Consultant Reports
- ✓ Cost Analysis
- ✓ Servicing Design Application

### CONSTRUCTION DOCUMENTATION

✓ Water	✓ Noise
✓ Electrical	✓ Geology
✓ Gas	✓ Geotech
✓ Roads	✓ Traffic
✓ Lighting	✓ Structural
✓ Landscape	✓ Communications



**04**

## CONSTRUCTION

- ✓ Tenders
- ✓ Review Engagement
- ✓ Commencement
- ✓ Superintendency
- ✓ RFI/Advice
- ✓ Council/Authority Management
- ✓ Inspections
- ✓ Surveying Setout & WAE



**05**

## COMPLIANCE/SUBDIVISION

- ✓ Govt. Approvals
- ✓ Authority Approvals
- ✓ Contributions
- ✓ Subdivision Consent
- ✓ LRS Lodgement & Title Issue
- ✓ Housing Applications



## OUR AWARDS

Beveridge Williams is proud to have received numerous awards throughout the years, reinforcing our commitment to consulting excellence.

Some of the more recent awards include:

- **2025** NSW Excellence in Surveying & Spatial Information Awards - Surveying Project Management - Harrington Grove
- **2025** VIC Excellence in Surveying & Spatial Information - Urban Cadstral Surveying & Land Titling Award - Webb St Level Crossing Removal project
- **2025** Excellence in Surveying & Spatial Information - Organisation of the Year Award
- **2024** Excellence in Surveying & Spatial Information Awards - Rural Cadastral Surveying Award and Winner Urban Cadastral & Land Titling Award
- **2024** Surveyors Australia National (Large) Consulting Excellence Award
- **2024** AILA SA/NT, The NT Award for Excellence for Tourism and the NT Achievement Award for Baruwei Lookout
- **2023** NSW Excellence in Surveying and Spatial Information - Professional Organisation of the Year
- **2022** AILA National Landscape Architecture Award for Urban Design – Cooling Darwin project
- **2021** AILA National Landscape Architecture Award for Cultural Heritage - Fairbridge Children's Park
- **2021** NSW Excellence in Surveying and Spatial Information - Urban Cadastral Award - Lidcombe Hotel
- **2021** NSW Excellence in Surveying and Spatial Information Surveying Project Management Award - Shell Cove
- **2021** National Surveying Consultancy Excellence Awards in the National Consultancy category.
- **2021** UDIA Award for Excellence for Best Master Planned Community - Waterford Rise Estate, Victoria
- **2020** UDIA Award for Excellence for Best Residential Development – Waterford Rise Estate, Victoria
- **2020** Urban Development Institute of Australia (UDIA) Great Place Award – Mandalay by Newland Developers
- **2019** Urban Development Institute Australia (UDIA) Award for Excellence, Best Master Planned Community - Mandalay by Newland Developers

# OUR COMMITMENT TO QUALITY, SAFETY AND ENVIRONMENT

## QUALITY

Our ISO 9001-accredited quality management system underpins our desire to provide our clients with certainty that their projects will be completed effectively and at a consistently high standard.

We understand the importance of monitoring and continually improving on our processes and have dedicated time and resources to achieving this.

We work with all staff to explore opportunities for improvement and innovative initiatives identified through non-conformances, internal audits and opportunities for improvement logged on our online QSE platform. This collective ownership over our quality system allows us to identify opportunities to save our clients time and money and ensure that we provide a quality product.

## SAFETY

At Beveridge Williams, safety is at the core of our business, and we actively work with our partners & contractors to ensure compliance and to strive towards a safe and healthy industry.

Focused on empowering staff to identify and eliminate safety risks and hazards, we encourage staff communication and involvement through monthly toolbox meetings, our OH&S committee, online suggestions, audits and training. We ensure that staff receive the required training and are inducted into our safety system of processes, guidelines and forms.

Beveridge Williams has developed an industry leading smartphone application that allows site prestart meetings to be conducted and recorded efficiently, paperless, and auditable using mobile phones. Our culture of reporting and investigating incidents and near misses encourages continuous improvement and has resulted in exceptionally low incident frequency and lost time injury rates.

## ENVIRONMENT

We are committed to reducing our impact on the environment and improving sustainability measures, as evidenced by our ISO 14001:2008 certification. Focusing on both client service offerings and internal business management, we implement a range of initiatives and metrics to promote positive environmental impact in our service provision.

In addition to encouraging recycling and the purchase of environmentally friendly products, other initiatives include using rigorous engineering processes, including quality assessment and reporting, to ensure sustainable measures are taken and that our impact on the environment is minimised.

We are committed to achieving carbon neutrality as soon as practical. Measures are in place to reduce electricity consumption and waste, but eliminating carbon emissions from our unavoidable use of electricity and vehicles remains our major challenge. Our first step towards carbon neutrality has been to register with Climate Active to have our office-based services certified.







## OUR ROLE IN SOCIETY

At Beveridge Williams, we reflect our values by striving for positive impact on the individuals and communities we live in and work with

We support and endorse many charity and community events, encouraging our teams to actively participate in hands-on activities, including the planting of trees with Landcare Australia.

Some of the initiatives we support are:

- Post bushfire assistance in regional Victoria - Survey teams donated their time to assist landowners with title re-establishment to mark the affected boundaries for new fencing
- Tree planting with Landcare Australia
- Women's Property Initiatives
- Uganda Schools for Life Program
- Nepal National Association of Women in Construction Project
- Local sporting clubs in regional communities
- Local community events, such as the Camden Fair in NSW.
- Good Friday Appeal
- Australia's Biggest Morning Tea
- Mental Health Month and R U OK Day?
- OnTrack Foundation (Soup bus for the homeless)
- Push Up Challenge in support of Headspace,
- National Youth Mental Organisation
- STEPtember in support of cerebral palsy
- Bushfire Donations - funds raised in support of Country Fire Authority, Wildlife Victoria, NSW Rural Fire Service, St Vincent de Paul and WIRES Australia.
- Variety Bash Car Rally

We also support our staff in their individual social initiatives.

***"Nationally based, community focused."***

## SPOTLIGHT ON SPECIFIC INITIATIVES:

### Reconciliation Action Plan

The establishment of a Reconciliation Action Plan through Reconciliation Australia was an important step in our firm playing an active and meaningful role in reconciliation.

Our RAP involves establishing and strengthening mutually beneficial relationships with Aboriginal and Torres Strait Islander stakeholders and organisations, a focus on Aboriginal and Torres Strait Islander recruitment, procurement from Aboriginal and Torres Strait Islander businesses, plus more.

Through communication, process change and the guidance of the internal Reconciliation Working Group, many areas of the business are now supporting and implementing our reconciliation plan. For example, procurement from Supply Nation and Kinaway certified businesses has increased and will continue to do so, with all our company clothing and PPE workwear supplied by Geared Up Culcha, an Aboriginal and Torres Strait Islander businesses.

There is an increasing community awareness and understanding of the deep connection to country that First Nations peoples have to the lands on which we work. Our involvement in land development provides the opportunity to promote cultural understanding and appreciation through our project management, planning, urban design and landscape architecture. Our RAP helps us build the connections and understanding needed to deliver projects that appreciate and respect Aboriginal and Torres Strait Islander cultures.



### Our partnership with Landcare Australia

We are committed to environmental sustainability and have partnered with Bass Coast Landcare to help fund Landcare community projects. Examples of Land Care initiatives include supporting and promoting sustainable agriculture, natural resource management, revegetation, wetland conservation, endangered species habitat protection, and urban greening. Apart from funding sponsorship, we also participate in in-kind initiatives, including the yearly tree planting day in Victoria.

### Coburg Houses

Women's Property Initiatives is a not-for-profit community housing provider for women facing homelessness by providing permanent and affordable homes, access to support networks and ongoing advocacy. Beveridge Williams is a proud supporter of Women's Property Initiatives, providing pro-bono planning support for the development of social housing at Coburg, and now at Beaconsfield.



# OUR COMMITMENT TO RECONCILIATION

Beveridge Williams is committed to advancing reconciliation through respect, relationships and meaningful action. We acknowledge the Traditional Custodians of the lands on which we work and pay our respects to Elders past and present.

As a land development and infrastructure consultancy, our work is intrinsically connected to Country. Through surveying, planning, engineering, urban design, landscape architecture and environmental services, we help shape places where people live, work and gather. This gives us both an opportunity and a responsibility to recognise the enduring cultural history of the land and to work respectfully with First Nations peoples to ensure this knowledge is acknowledged and reflected in the built environment.

Our Innovate Reconciliation Action Plan 2026–2027 builds on the foundations established through our first Reflect RAP and provides a practical framework for continuing our reconciliation journey. The RAP is endorsed by our Board and supported by a dedicated RAP Working Group, RAP Champion and First Nations Advisor.

It focuses on strengthening relationships with Aboriginal and Torres Strait Islander peoples, deepening cultural understanding across our business, increasing opportunities for First Nations businesses through procurement, and developing more effective pathways for employment, training and culturally safe participation.

We believe reconciliation begins with respect, truth-telling and a willingness to listen and learn. Our commitment is reflected in the way we engage with clients, communities, partners and our people, and in our ambition to see First Nations cultures more commonly recognised, included and celebrated in the projects and places we help create. Through our RAP, we aim to convert good intentions into tangible outcomes that support a more respectful, inclusive and reconciled Australia.



## The Horsby Quarry Park

The Hornsby Quarry Park project is a major undertaking to repurpose a large former quarry on the edge of bushland and the Hornsby CBD to create a dramatic parkland. The project demonstrates that land re-development projects undertaken in consultation with First Nations peoples, can make a powerful contribution to reconciliation.

# TECHNOLOGY & INNOVATION

## THE LATEST TECHNOLOGY FOR QUALITY OUTCOMES

At Beveridge Williams, we use technology with purpose, combining the right people and advanced spatial solutions to deliver faster, more cost-effective and reliable outcomes for our clients.

Our integrated team of surveyors, engineers, planners and sub-surface utility team provides a true one-stop solution, reducing coordination time, minimising delays and improving project efficiency.

Our technology suite, including mobile laser scanning (MLS), terrestrial laser scanning, UAV/drone surveys and aerial LiDAR, enables rapid, high-accuracy capture of spatial data across large and complex sites, often with minimal disruption to live environments. MLS delivers dense, georeferenced point cloud data that underpins efficient 3D modelling, Digital Twins and engineered outputs, reducing rework and improving decision-making.

Advanced scanning and AI-enabled workflows are also transforming the efficiency of stratum and strata measurement. Precise capture of building geometry and AI-assisted drafting of “off-the-plan” strata significantly reduces area discrepancies, approval delays and manual errors—saving time and cost without compromising statutory accuracy.

By delivering information in the most fit-for-purpose format, from raw spatial data through to Digital Twins and construction-ready outputs, Beveridge Williams helps clients reduce risk, streamline delivery and achieve better outcomes sooner.

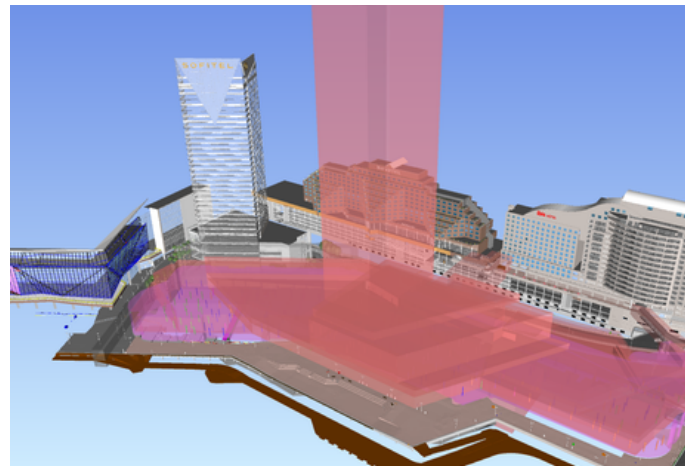


## SEEING ABOVE AND BELOW YOUR PROJECT

Beveridge Williams has developed systems and procedures to deliver a fully integrated and attribute-rich Revit BIM product.

This product moves beyond point cloud and object modelling, to fully integrate attribute elements such as:

- Land Parcels in 3D form, with relevant title information
- Easements in 3D form, including beneficiary, etc.
- 3D Building Design Envelope (BDE)
- Sub-Surface utilities, including attributed elements such as:
  - Asset Owner
  - Asset size, arrangement
  - Asset material
  - Quality Level classification
  - Survey date
  - Structural modelling from historical records



# OUR SERVICES

## URBAN DESIGN

Our Urban Designers provide innovative design solutions to private and public-sector clients across Australia for residential, commercial, industrial and mixed-use developments. The team is experienced in a diverse range of land development projects and provides solutions that demonstrate our commitment to sustainability and great places.

Our design philosophy is based on our Urban Design Pillars:

- Place Identity: enhancing the relationship between our space and the surrounding environment.
- Celebrating: recognising the site's natural character and building upon the key existing place characteristics
- Sustainability: adopting core sustainable design practices to promote a climate-resilient future community
- Innovation: developing site-specific responses that reflect best practice urban design
- Community: establishing the foundations for an enriched neighbourhood, and to achieve pride of place
- Collaboration: connecting with our internal and external teams to enhance projects, problem solve, act efficiently, and to achieve innovative design outcomes
- Excellence: continually achieving high-quality design outcomes

We have a detailed working knowledge of all relevant guidelines and legislation for land development and our design approach addresses local community and broader social issues specific to each development.

The team has well-established networks with councils and authorities involved in land development as well as land sales agents, who provide advice on the market relevance of our subdivision designs.

Beveridge Williams offers the following urban design services:

- Site analysis and opportunities plans
- Design response plans
- Feasibility plans for new subdivisions
- Vision Documents
- Indicative concept plans
- Detailed development plans and indicative subdivision plans
- Precinct Structure Plan submissions
- Strategic planning & design documents
- Landuse plans
- Community and Council presentation material
- Marketing Plans
- Massing models



## TOWN PLANNING

Our team of Town Planners, incorporating Barr Planning, provide strategic and statutory planning services and focuses on understanding the priorities of our clients and delivering timely outcomes which meet their specific needs.

As highly experienced professionals, we provide expert advice and guide clients through the complex planning system - from inception to completion of a project.

Our teams have the expert local knowledge and experience to facilitate successful outcomes for residential communities, commercial, industrial, mixed-use, resource industry, recreation, tourism and educational developments, as well as major infrastructure projects.



We adopt an interdisciplinary approach, providing statutory and strategic planning services, including initial feasibility, and provide planning support for the entire life cycle of a project.

Services offered by our Town Planners include:

- Due diligence and pre-purchase advice
- Preliminary assessment advice
- Planning and integrated approvals advocacy
- Strategic and master planning
- Infrastructure planning
- Environmental planning
- Land use impact assessment
- Planning Scheme amendments and submissions
- Planning Permit and Development Applications
- VCAT, NSWLEC and Planning Panel representation
- Expert Witness Statements
- Strategy / Policy preparation, submissions and review
- Stakeholder consultations
- Assistance with the preparation of Visual Impact Statements, Bushfire Assessments, ESD assessments, and Crime Prevention through Environmental Design Reports.



## DESIGN ASSESSMENT SERVICES

The Beveridge Williams Design Assessment Panel is a conduit between developers, their estate purchasers, builders, certifiers/or surveyors, and architects and/or designers.

The team undertakes estate assessments Australia-wide, evaluating each submitted house plan to ensure design compliance with the estate guidelines/ covenant requirements set by developers, in line with council and statutory conditions.

With years of design and estate approval experience, the team can expertly implement a client's chosen design guidelines. They understand the intricacies of the approval process, foreseeing issues with plans and resolving these with all parties to obtain approval status.

The Beveridge Williams website contains a specific portal for design applications, making it a smooth and seamless process for approval applicants.

With design compliance an integral part of the development process, the Beveridge Williams Design Assessment Panel takes the onus off developers by providing an internal resource for assessment.

The Design Assessment Approvals team can:

- Prepare Design Guidelines
- Assess the Individual Designs
- Conduct Onsite Compliance Audits



## LANDSCAPE ARCHITECTURE

Our award-winning team of landscape architects are known for their ability to deliver enduring, sustainable landscape architecture and urban design solutions.

With a highly experienced Landscape Architecture team in Victoria and the highly regarded CLOUSTON Associates located in Sydney and Darwin, we bring together diverse skill sets and decades of experience.

With projects spanning the country, we work as one cohesive team to create meaningful spaces for government and corporate clients: transforming waterfronts, parks, walkways, residential communities and streetscapes into places with purpose.

An in-depth understanding of local authorities' guidelines and requirements allows us to navigate the approvals process for all aspects of landscape design.

Our Landscape Architecture teams strive for achievable, practical and cost-effective design solutions that celebrate the natural environment and seek to enhance project areas.



We provide the following landscape architecture services:

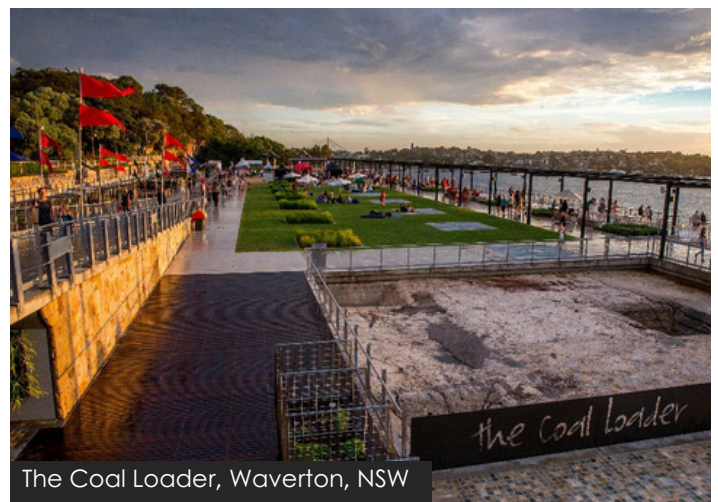
- Site investigation, analysis & feasibility plans
- Master plans
- Concept plans
- Landscape plans for town planning permits
- Landscape Master Plan reports and plans
- Urban design plans for new subdivisions
- Marketing plans
- Visualisations and animations for development
- 3D modelling of broader landscapes, parks, and design elements
- Waterway re-vegetation & native vegetation off set plans
- Contract documentation & administration
- Strategic planning & design documents
- Landscape guidelines



Five Farms Estate, Clyde North, VIC



Clyde Shopping Centre, Clyde, VIC



The Coal Loader, Waverton, NSW



## SURVEYING

Our land surveying teams have specialist skills, the latest technology and a track record of delivering high level advice to some of Victoria and NSW's largest public service providers as well as private developers, both large and small.

We have well-established relationships with key individuals, government bodies and industry organisations that are important to the success of land development and infrastructure projects.

When engaging our surveyors, our commitment to providing our clients with the highest level of service while meeting deadlines and maintaining high-quality work is at the forefront of our work.

Our land surveying team provides a complete range of surveying services, including:

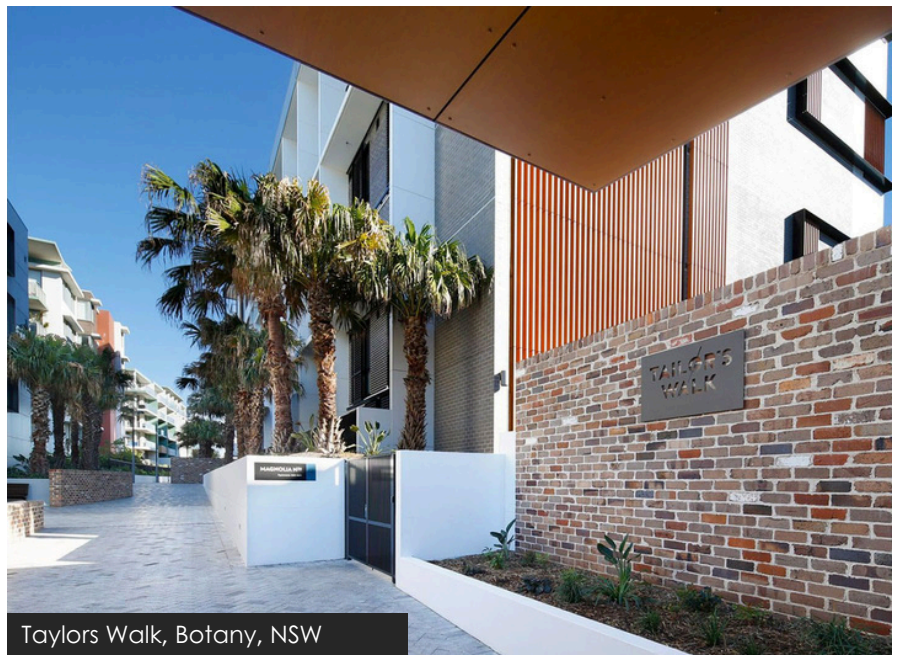
- Land Subdivision
- Volumetric, Stratum and Strata Subdivisions of Buildings
- Construction Setout
- Boundary Surveys
- Land Acquisition Plans for government authorities
- Crown Lease Surveys
- Laser Scanning Surveys

- 3D modelling from point clouds, including Revit
- Mining, earth and movement and structure surveillance surveys
- A-Spec and asset recording
- Underground services locating
- Greenfield estate surveying services
- Feature and level surveys
- Title Boundary re-establishment surveys (Identification Report)
- Area and lease plans
- Volume surveys
- Survey infrastructure plans including certification (NSW)

### Survey Plans:

Detailed survey plans are provided in advanced formats, incorporating the latest technical methods for visualisation and gathering information. Plans can be supplied in:

- 3D plan presentation format
- 3D digital terrain format, using 3D point cloud.
- 2D traditional format
- Revit model



## SUBSURFACE UTILITY INVESTIGATION (SUI)

We have a team of highly qualified and experienced Before You Dig Australia (CERTLOC) Accredited Utility Locators and Surveyors who are experts at not only in investigating and marking underground utilities, but in translating utility information into engineering-grade survey data.

When assets are located underground, specialised research and resources are necessary to complete a utility survey, as serious consequences can result if anything is missed.

Utility Survey and Drafting is unique, and our team's knowledge of locating methodologies, tolerances, site constraints, and their overall understanding of utilities are essential for risk minimisation and achieving quality outcomes.

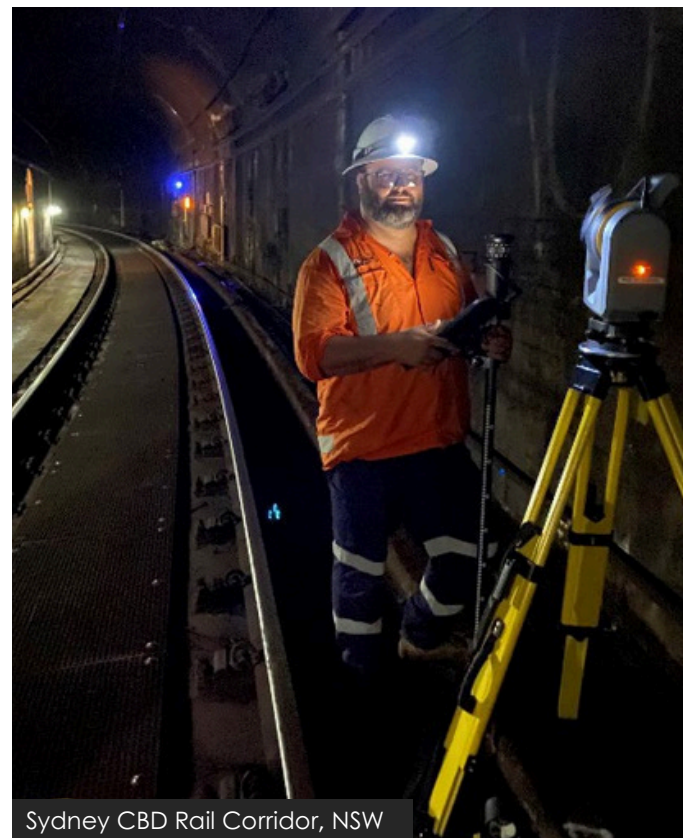
We use a range of electromagnetic and high-frequency induction devices and complementary technology to identify, locate and mark underground services such as metallic water mains, electrical and communications infrastructure.

The Subsurface Utility Investigation team can:

- Use both Electromagnetic Locating (EM) and Ground Penetrating Radar (GPR) technology to Identify underground utilities and substructures.
- Carry out Utility Survey and Mapping.
- Undertake non-destructive excavation to safely expose and pothole underground utilities, without damaging utilities or their coatings.
- Utilise proven technologies and methods, including CCTV Inspection, to efficiently assess the condition of underground structures.
- Undertake full Drainage Investigations, Modelling and Reporting.



The subsurface utility investigation team has worked on a diversity of projects across NSW, including the scanning of a heritage culvert under Sydney's CBD.



Sydney CBD Rail Corridor, NSW



## CIVIL ENGINEERING

Beveridge Williams has a team of registered professional Engineers across metro and regional Victoria and NSW who specialise in the design and construction management of land development projects.

Our civil engineers are involved in all aspects of a development project whether it be road provision or the unseen infrastructure, including drainage and service utilities. Our design intelligence and sustainable engineering solutions have helped shape all types of infrastructure across residential, commercial, industrial and municipal sectors.

We have designed and developed our experience through the delivery of tens of thousands of lots across Melbourne and throughout regional Victoria.

We have direct access to professional advice in other disciplines, ensuring our approach is well considered and delivered without delay. In all aspects of land development engineering, from feasibility and master planning, through to detailed design and delivery, there is little we don't know.

We welcome the opportunity of delivering an innovative solution in a highly regulated sector. We rise to the challenge of delivering the most ambitious of programs. We strive to improve the outcomes for our clients and for the future residents to enable them to create a community that they are proud of.

Our capabilities include:

- Feasibility and due diligence
- Master planning
- Functional & detailed design
- Contract administration
- Site surveillance
- Construction supervision
- Project Management

Projects we deliver include:

- Greenfield residential developments
- Industrial estates
- Retirement villages
- Medium-density sites
- Infill & urban renewal developments
- DCP-funded infrastructure
- Major roads and VicRoads intersections
- Wetlands, retarding basins and culverts
- Branch sewer & trunk water mains
- Sewer pump stations



## PROJECT MANAGEMENT

Effective delivery of land development projects requires coordination and negotiation within a multifaceted environment of referral authorities, specialist consultants and contractors.

Our Project Managers are experts in coordination and negotiation – driving project progress, reducing the risk of critical delays, maximising design efficiencies, and managing costs, all while ensuring effective communication among project stakeholders.

They are responsible for the day-to-day management of external and internal stakeholder relationships, deadlines, budgets, and adherence to regulations, taking the onus off the client to provide internal resources for this management role. The Project Manager serves as the single point of contact for the client on each component of the project throughout its lifespan.

The team are specialists who understand the intricacies of the external and internal disciplines and services involved in delivering a successful development project.

Our expertise includes:

- Feasibility assessments
- Client communication and reporting
- Appointment and management of subconsultants
- Facilitation of approvals from authorities
- Assessment and evaluation of project status
- Project team coordination
- Stakeholder management
- Preparation of a project program (using MS Project) and the provision of monthly updates;
- Establishment and maintenance of the project information systems
- Financial reporting and bank funding reconciliations
- Managing OH&S requirements.





## INFRASTRUCTURE ENGINEERING

The Beveridge Williams Infrastructure Engineering team offers the expertise to provide specialised design services on a wide variety of projects, including wind and solar farms, heavy haulage routes, mines, airports and rail. Whether for State and Local governments, private developers or civil contractors, our team of engineers and project managers are involved in every aspect of the project from inception, with the development of functional designs, right through to detailed design and project delivery.

No matter the scale of the project, we understand the value of continuous communication and how the provision of timely and accurate advice can improve project outcomes. From rural or urban road projects to sewer and water schemes, we pride ourselves on our ability to deliver innovative and creative solutions that provide an optimal and practical project outcome.

Our capabilities include:

- Concept Designs
- Functional and Detailed Designs
- Service Coordination
- Project Management

Projects we deliver include:

- Rural road upgrades
- Major arterial roads and VicRoads intersections
- Road safety upgrades
- DCP-funded infrastructure
- Branch sewers and trunk water mains
- Sewer pump stations and rising mains
- Sewer and water servicing strategies



Golden Plains Wind Farm West Intersection Upgrade, VIC

## TRAFFIC AND TRANSPORT ENGINEERING

With a strong history of design excellence spanning many years, Beveridge Williams offers a comprehensive set of services, serving as a convenient 'one-stop shop' for the needs of both public and private clients in the development and infrastructure sectors.

We focus on delivering the practical aspects of planning, designing, operating, and maintaining transportation systems. We aim to contribute to the development of safe, efficient, and livable communities.

Our Traffic Engineering and Transport Planning group will bring extensive experience to your project. We've been involved in a wide range of projects related to transport and road safety, covering all stages from high-level strategic planning to the final operational stages. Our primary goal is to manage project risks effectively and to provide practical, safe, and sustainable solutions that enhance your project outcomes.

Our client base includes Local and State Governments, commercial developers, tertiary institutions, and other important industry partners.

We've successfully provided support for diverse project types, such as large residential subdivisions, apartment complexes, townhouse developments, windfarms, wineries, schools, childcare facilities, shopping centers, and various other commercial projects.

Our key services include:

Strategic - Transport Planning:

- Traffic modelling
- Traffic studies

Precinct structure plans:

- Rezoning
- Activity centre planning
- Planning scheme amendments
- Master planning
- Corridor assessments
- Feasibility studies

Development - Traffic Engineering:

- Traffic impact assessments (TIA)
- Car parking studies and assessments
- Waste management plans (WMP)
- Green travel plans (GTP)
- Traffic and parking surveys
- Road and intersection design
- Concept layout plans
- Functional layout plans (FLP)
- Traffic signal plans (TSP)
- Local area traffic management (LATM)
- Swept path analysis
- Lighting assessments
- Waste Management Plans (WMPS)



## WATER RESOURCES ENGINEERING

We see water as a resource, as an opportunity to enhance the places we live. Whether for recreation, beauty or sustainability, people have always wanted to live near water. Of course, with water, there can be risks like flooding, public safety and pollution.

Beveridge Williams' Water Resources team are experts in developing solutions that can bring water into our lives, while managing the risks.

We can consider stormwater management from a traditional perspective, developing strategies that provide the framework for management of stormwater to meet the requirements of various authorities. We strive for a more contemporary approach though, of stormwater management and integrated water management plans being prepared concurrently, thus ensuring that the opportunities to capitalise on water resources are integral with planning of a development rather than as an afterthought.

We also specialise in servicing catchment management and local government authorities. Our team can work at the high level of developing strategies for the management of catchments, to the detailed levels of developing solutions to protect people and property from flooding or analysing the performance of drainage networks.

Our expert and dedicated team are ready to help with:

- Hydrologic modelling
- Flood modelling and floodplain management
- Water sensitive urban design
- Stormwater masterplanning and preparation of SWMS/WCMS
- Design of channels, waterway crossings
- Design of detention/retarding basins and OSD
- Design of WSUD assets, including Wetlands and Bioretention Systems
- Design of flow control and flood protection structures
- Design of subdivision and transport drainage
- Design of stormwater harvesting and re-use systems
- Design of erosion protection and stream remediation works
- Dam break downstream inundation analysis and risk assessments
- Liaison with councils and approval authorities



Seagrove Estate, Cowes, VIC



## ENVIRONMENTAL CONSULTING

Our Environmental division brings a blend of practical project experience and professional expertise to provide technically and economically sound solutions to environmental problems.

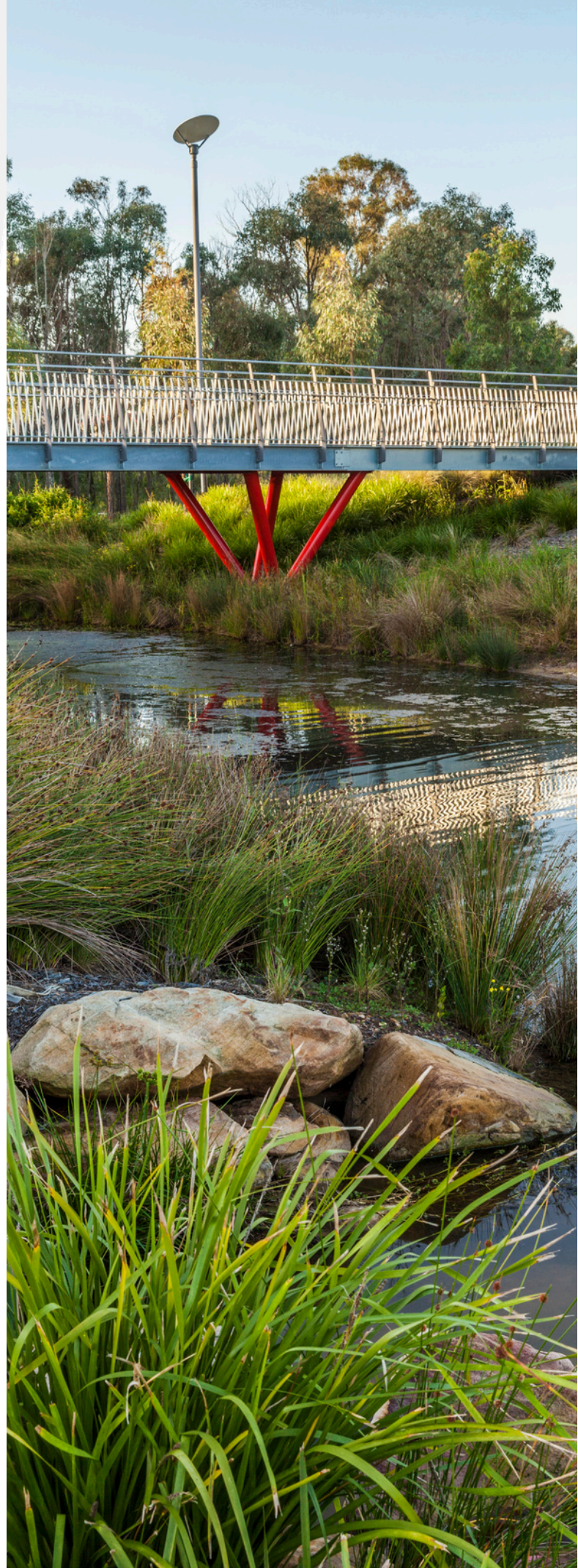
Our team have assessed over 800 greenfield and brownfield sites across Victoria for state and local government clients and private developers.

We continually monitor changing environmental legislation and regulations, investigation and clean-up standards, risk assessment procedures and remediation technologies to successfully offer the following services:

- Contamination assessments (preliminary and detailed)
- Hydrogeological investigations
- Soil vapour assessments, including landfill gas
- Contamination remediation, including underground tank removal
- Assessment works for Environmental audits and
- Preliminary Risk Screen Assessments (PRSA) Risk assessment
- Contaminated soils characterisation and clean fill classifications
- Environmental management plans
- Acid sulphate soil studies
- Water pollution studies
- Advice regarding EPA clean-up or pollution abatement notices
- Litigation assistance and expert testimonials



Former Service Station Environmental Audit, VIC



## WATER SERVICES COORDINATION (NSW)

Beveridge Williams offers a range of water sewer infrastructure services across NSW, carried out by a fully accredited Sydney Water Services Coordinator.

Beveridge Williams can act on a client's behalf to submit a Section 73 Compliance Certificate.

We are approved by Sydney Water to design sewer, potable and recycled water main extensions and adjustments in the categories of S1 (Sewerage Reticulation DN 150- 300), S2 (Sewer Standard DN 375-750), W1(Water Reticulation DN 100-375), W2(Water Supply DN > 375-750), RW (Recycled Water DN 65-375) and LP (Pressure Sewer Systems).

For nearly 30 years, the team has been the sole Water Service Coordinators for many key projects in Harrington Park, Harrington Grove and Catherine Park, NSW.

Taking it one step further, Beveridge Williams can also assist with Water and Sewer Project Coordination, ensuring the smooth implementation of these designs and that the right quality control measures are put in place.

In addition to Section 73 Compliance Certificates and Building Plan Approvals, Beveridge Williams can also assist with:

- Water and Sewer Design, Project Management & Supervision
- Water and Sewer Adjustments /Extensions/ Deviations & Amplifications
- Sewer catchment designs and catchment analysis
- Pressure Sewerage Service Reticulation Extension /Adjustments
- Strategic planning and development servicing strategies
- Building Over / Adjacent to Sydney Water's asset applications
- Notice of Requirements (NOR's)
- Service Protection Reports (Sewer Peg out Reports)
- Plan Approvals
- Pier Inspections
- Concrete Encasement Inspections
- Sydney Water service prints (Hydra prints and Sewerage Service Diagrams)



## RENEWABLE ENERGY & SUPPORTING NETWORKS INFRASTRUCTURE

The transition to sustainable energy is essential to achieving a net zero future, and Beveridge Williams is committed to supporting renewable energy and energy infrastructure projects across planning, approvals, surveying, engineering, design and delivery.

Large-scale renewable energy projects are complex, requiring careful navigation of regulatory approvals, technical design, infrastructure delivery and regional on-the-ground support. Beveridge Williams brings the multidisciplinary expertise needed to guide projects from early feasibility through to construction and implementation.

Our services include:

### Planning and Approvals

We provide strategic and statutory planning advice, due diligence assessments, approval pathway strategies and impact assessments to support Environment Effects Statements, Environmental Impact Assessments and other regulatory processes.

### Land Surveying and GIS

Our survey and GIS teams deliver accurate site data, title and tenure assessments, easement support, mapping, site set outs, as-built surveys and asset management plans for both single-site and linear infrastructure projects.

### Engineering and Traffic Management

We provide infrastructure access assessments, civil engineering design, traffic management plans, road infrastructure design and construction management to support safe, efficient project delivery and site access.

### Landscape and Urban Design

Our landscape architecture and urban design teams prepare visual impact assessments, project renders, landscape master plans, site context analyses, approvals documentation, and detailed design plans to support community engagement, Council approvals, and project delivery.

Projects we support include:

- Wind farms: Golden Plains, Stockyard Hill, Delburn and Star of the South
- Solar farms: Horsham, Carisbrook, Glenrowan and Terang
- Battery storage projects: Hazelwood BESS and La Trobe BESS
- Transmission infrastructure: Marinus Link Electricity Transmission





## OUR PROJECTS

Snapshot of the diversity of projects undertaken by Beveridge Williams. For further and detailed project information, visit [www.beveridgewilliams.com.au/projects](http://www.beveridgewilliams.com.au/projects)



Aurora Community, VIC

Services: Surveying, Urban Design, Landscape Architecture, Town Planning, Project Management, Water Resources Engineering, Civil engineering, Environmental Consulting.



The Langston, NSW

Services: Surveying, Stratum Subdivision, Strata Subdivision, Titling Advice & Management  
Enabling Infrastructure Surveys



Cooling Darwin Project, NT

Winner: 2022 AILA National Landscape Architecture Award for Urban Design  
Services: Landscape Architecture



St Germain Village, VIC

Services: Survey, Water Resources Engineering, Civil Engineering, Urban Design, Landscape Architecture, Project Management



Fairbridge Children's Park, NSW

Winner: AILA National Landscape Architecture Award for Cultural Heritage 2021  
Services: Landscape Architecture



The Waterfront, NSW

Winner: 2021 EISSI Award for Survey Project Management  
Services: Surveying, Project Management



Woolamai House, Philip Island, VIC

Services: Survey, Project Management, Urban Design, Water Resources Engineering, Landscape Architecture, Civil Engineering, Town Planning.



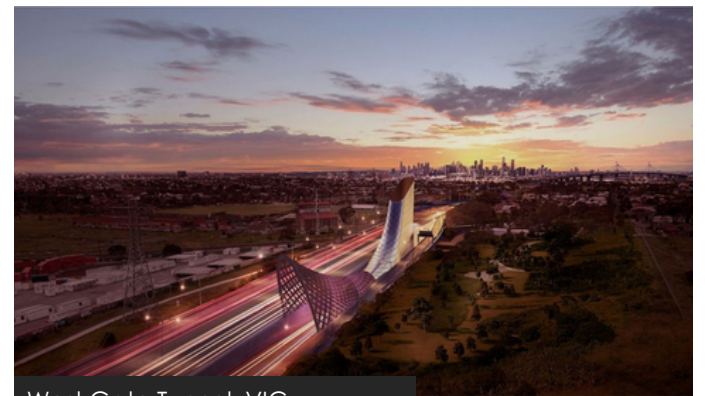
AGL Loy Yang Power Station, VIC

Services: Engineering Survey of bucket-wheel dredger



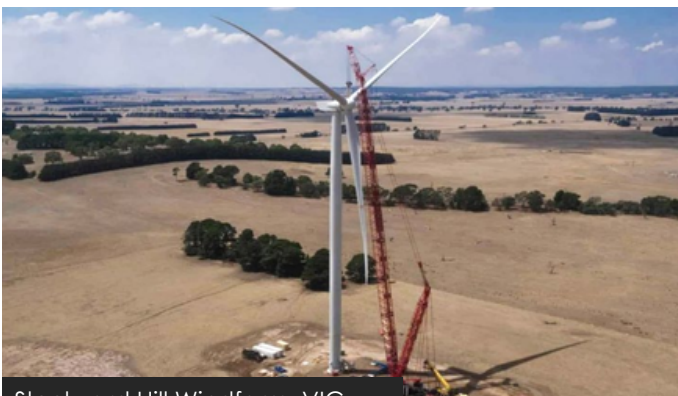
Muswellbrook Bypass, NSW

Winner: 2024 NSW EISSI Awards - Rural Cadastral Surveying & Land Titling  
Services: Water Resource Engineering, Planning, Surveying, Engineering Design and Project Management



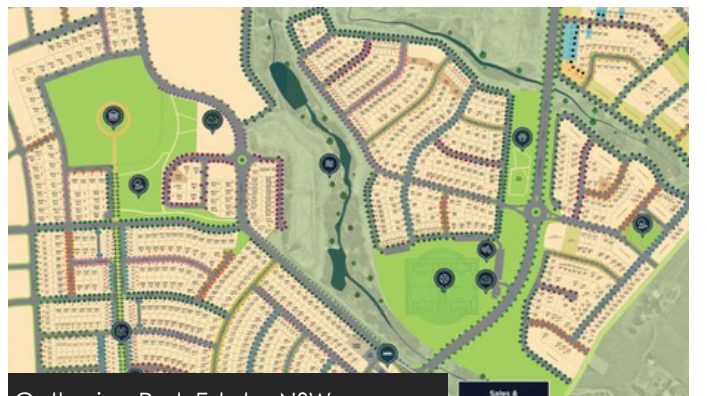
West Gate Tunnel, VIC

Services: Cadastral & Engineering Feature Surveys



Stockyard Hill Windfarm, VIC

Services: Surveying, Renewable Energy Infrastructure, Traffic and Transport Engineering



Catherine Park Estate, NSW

Winner: 2023 UDIA National Excellence in Residential Subdivision  
Services: Surveying, Land Titling and Water Service Coordination



Harrington Grove, NSW

Winner: 2025 NSW EISSI – Survey Project Management  
Services: Surveying, Project Management, Subsurface Utility Investigation, CAD/GIS Integration



Oran Park Town, NSW

Services: Surveying, Land Titling, Water Service Coordination and Strata Certification



Edmondson Park, NSW

Services: Town Planning, Surveying, Land Titling



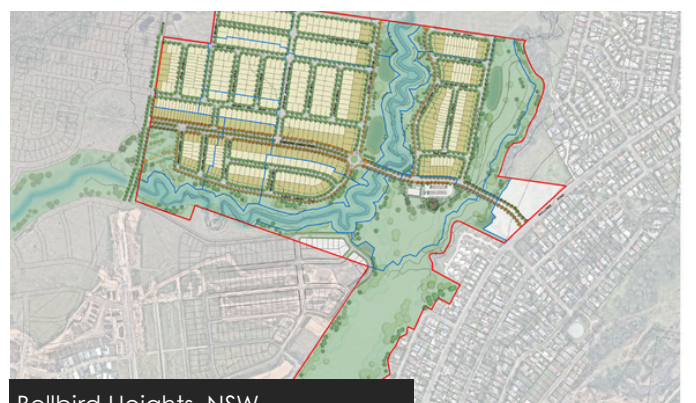
Georges Cove, Moore Park, NSW

Services: Project Management, Surveying, Engineering, Water Service Coordination



Aurora Community, VIC

Services: Urban Design, Landscape Architecture, Town Planning, Civil Engineering, Water Resources Engineering & Project Management



Bellbird Heights, NSW

Services: Water Resources Engineering, Town Planning, Surveying, Engineering Design & Project Management



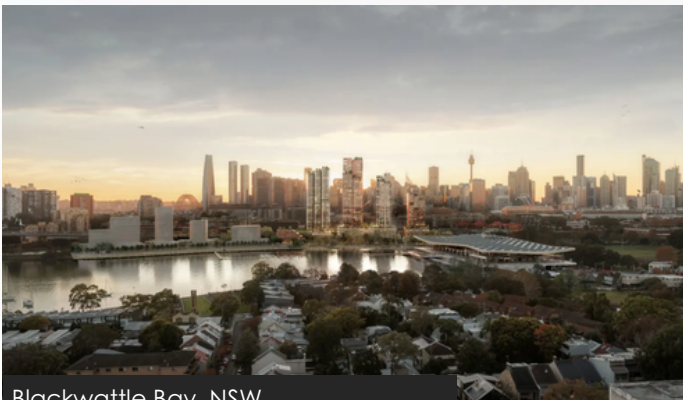
The Waterfront, Shellcove, NSW

Winner: 2021 NSW Excellence in Surveying & Spatial Information Awards  
Services: Surveying & Project Management



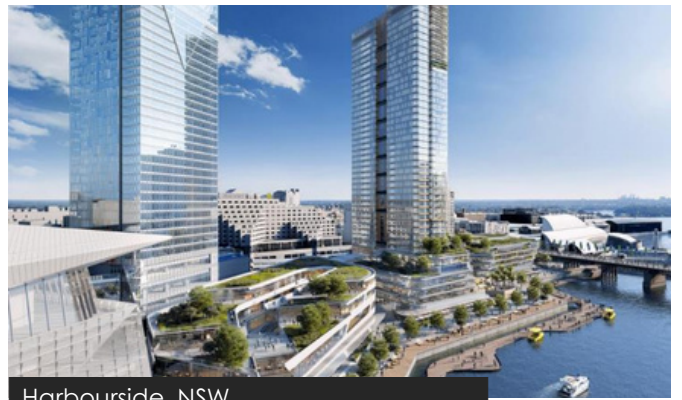
Epping, VIC

Services: Urban Design & Town Planning



Blackwattle Bay, NSW

Services: Project Management, Town Planning Coordination, Urban Infrastructure Support and Integrated Consultant Management.



Harbourside, NSW

Services: Land Titling, Revit Modelling, Subsurface Utility Investigation & Surveying.



Hartleigh Estate, VIC

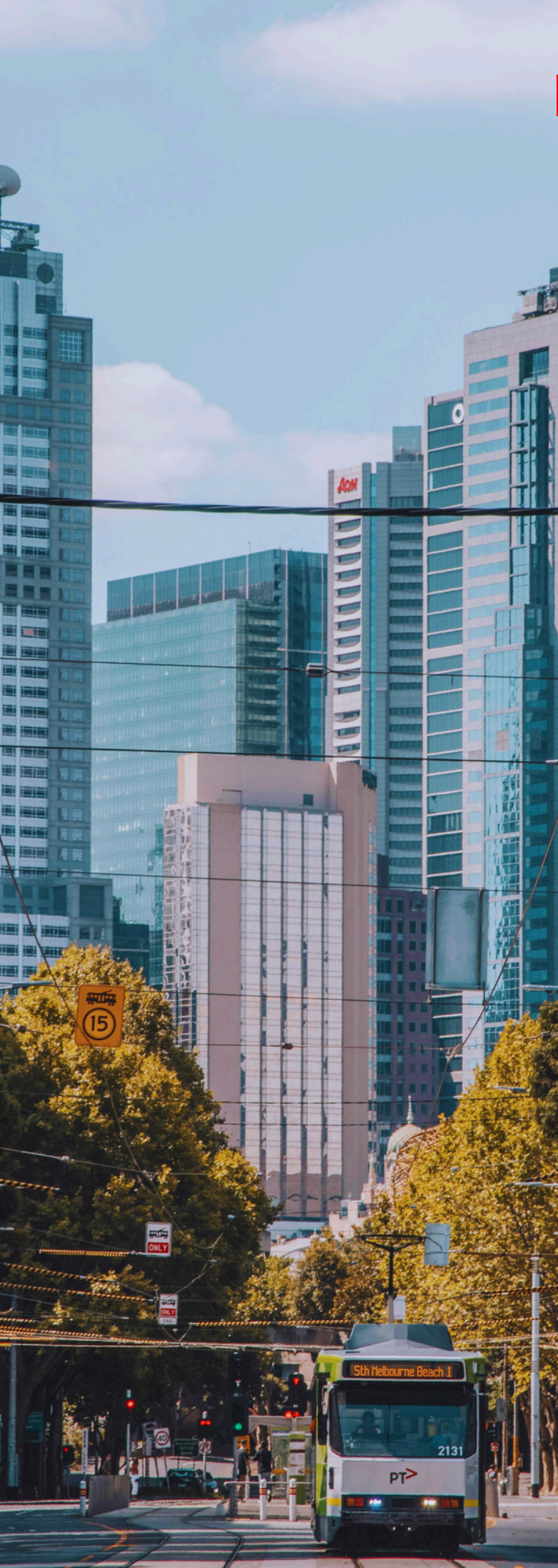
Services: Surveying, Water Resource Engineering, Town Planning, Civil Engineering, Project Management, Landscape Architecture & Urban Design



Level Crossing Removals, VIC

Services: Control Surveys, Feature Surveys & Cadastral Surveys





## OUR LEADERS

### THE BOARD AND EXECUTIVE TEAM

Our Board and Executive Team comprise experienced professionals whose priority is ensuring consulting excellence, the safety of our staff, and the career development of all employees. We aim high and champion new opportunities for employees, with a focus on training tomorrow's leaders.

The management team embraces change to improve employee relations, client experience, diversity, gender equality and social purpose. At Beveridge Williams, we see that leadership means empowering our people across all levels of the organisation.

All board members are graduates of the Australian Institute of Company Directors, fully understanding their governance obligations as they guide the company and its future expansion plans.



#### **Grant Hailes – Managing Director**

Grant has been a Director of Beveridge Williams since 1999 and Managing Director since 2013. Grant has extensive experience in urban development and was Project Director for several award-winning projects.

Always looking for better ways to add value and enhance projects for our clients, he continually drives the team towards delivering consulting excellence. Grant's passion is customer service and in optimising outcomes through collaborative relationships.

Grant is involved in many industry groups and is an active member of the CEO Institute.



**Michael Doery**  
**Chairman and Non-Executive Director**

Michael is an independent Non-Executive Director of Beveridge Williams and current Chair.

With an extensive non-executive career, he serves on numerous corporate and not-for-profit Boards. Michael's career commenced at KPMG, leading him to the role of Partner. Most recently, Michael spent nine years as Managing Director & CEO with Viatek Pty Ltd, a provider of managed print services, telecommunications, IT services and office automation.



**Peter Toole**  
**Executive Director / Manager VIC Regions**

Peter joined Beveridge Williams as a graduate surveyor in Leongatha in 1981 and has been a part of the company's management team and Director for over 40 years.

Peter drives the growth and development of the seven regional Victorian offices, utilising his professional expertise in cadastral surveying, rural town planning and project management.



**Kellie Hassab**  
**Executive Director / Manager NSW**

Kellie is a qualified Surveyor and Registered Planner with a postgraduate qualification in Environmental Studies. With over 30 years of experience in the development industry are diverse, and Kellie's surveying background supports a common-sense approach to land development solutions that meet clients' needs and expectations.

Her leadership is instrumental in the growth of Beveridge Williams in NSW, overseeing a team of over 130 employees and expanding the service offering.



**Andrew Busse**  
**Executive Director / Manager Survey Melbourne**

Andrew is a Licensed Surveyor who joined Beveridge Williams in 1997. Currently managing the Melbourne Surveying Division, which has grown exponentially over the past 25 years, he has led the team on many of Melbourne's key infrastructure and development projects.

Andrew has extensive involvement in the broader profession. He previously held board member positions for industry associations, including serving as President of Consulting Surveyors Victoria and Treasurer for Surveyors Australia.



**Tiffany Su**  
**Executive Director / Financial Controller**

Tiffany started with Beveridge Williams in 2009 as a Financial Accountant and was promoted to her current role of Financial Controller in 2011.

Tiffany gained her experience from working for both private and listed companies in Australia. Responsible for the company's financial management and reporting, relevant statutory compliance, tax, and payroll, Tiffany also provides strategic financial advice for the company in areas such as mergers and acquisitions.



**Andrew Mellett**  
**Executive Director / Manager Strategy and Operations**

Andrew Mellett is the leader of the Environmental Division of the organisation, with over 20 years of environmental consulting experience behind him. He has been a serving member of the ACLCA Executive Committee (Victorian Chapter), a project director and provides evidence as an expert witness.

After completing his Master of Business Administration, Andrew now also oversees strategy and operations for the company, driving the business planning process and streamlining operations for maximum efficiency as the organisation continues to expand.



**Bernard Collins**  
**National Manager Design and Strategy**

With a focus on achieving great outcomes for clients and enhancing the urban form, Bernard has had an extensive career across local and regional government, not-for-profit agencies, and large corporations, with the last 25 years focused on consulting and land development in particular. His experience lies in statutory and strategic planning, community consultation, policy development and project management.

Bernard is responsible for the Design and Strategy division of Beveridge Williams, which includes Town Planning, Urban Design and Landscape Architecture. He is also responsible for the company's Marketing, QSE, OH&S, AI and Innovation Teams.



**Jackson Zaal**  
**Manager Western Victoria**

Jackson is a Civil and Environmental Engineer with many years of experience in land development and infrastructure projects across Victoria. His initial engineering experience within Beveridge Williams has been in the Gippsland region, working in design, construction management and project management.

After relocating to the Ballarat office in 2016, Jackson was appointed Manager of the Western Victoria region, focusing on client satisfaction, delivering the highest service levels and building staff capabilities.



**Alisanne Boag**  
**National Manager Planning**

As National Manager – Planning at Beveridge Williams, Alisanne provides strategic, technical and commercial leadership of the planning discipline across the business. She is a town planner and project manager with extensive experience in feasibility, approvals strategies and the delivery of approvals for large-scale residential, infrastructure and renewable energy projects, and expertise in project coordination, and environmental impact assessment.

She is passionate about shaping innovative, sustainable communities and delivering high-quality planning outcomes for clients. Her leadership style is collaborative, transparent, and results-driven, ensuring that the Beveridge Williams Planning team remains at the forefront of the industry.



**Roger Dowling**  
**National Engineering Manager**

Roger has over 22 years of experience in project management and surveying with Beveridge Williams, and has facilitated the delivery of large infrastructure and land development projects to both government and private agencies.

His strong communication skills and eye for detail enable him to achieve the best outcomes for clients.



**Anthony Oliver**  
**Project Manager & Registered Land Surveyor**

Anthony is a Registered Land Surveyor and has over 30 years experience in the infrastructure, land and property development industry. Anthony is responsible for managing land development projects, including collaborating across multiple sectors and disciplines to assist our clients in achieving integrated and cost-effective solutions.

## OUR AFFILIATIONS

Beveridge Williams aims to enhance and develop the land development industry via providing significant input into several industry professional bodies. The team is actively involved in the following organisations:



Many of our team members hold (or have held) leadership positions within these organisations, guiding the future of the industries and working towards improved methodologies and legislation. This includes Fellows of the Australian Institute of Landscape Architects, Chairs and Board / Executive positions at the Association of Consulting Surveyors and Australian Contaminated Land Consultants Association.

## OUR ACCREDITATIONS



Certified by a third-party JAS-ANZ accredited company to the following standards:

AS/NZS 45001:2001 Occupational Health and Safety Management System

ISO 9001:2015 Quality Management System

ISO 14001:2015 Environmental Management System







## FOLLOW US:



Beveridge-Williams



beveridgewilliams

Our third-party certification includes

AS/NZS ISO 9001

Quality Management

AS/NZS 45001

Occupational Health & Safety Management

AS/NZS ISO 14001

Environmental Management



## CONTACT US:

### VICTORIA

■ Melbourne (Head Office)

melbourne@bevwill.com.au

03 9524 8888

■ Ballarat

ballarat@bevwill.com.au

03 5327 2000

■ Geelong

geelong@bevwill.com.au

03 4224 0410

■ Leongatha

leongatha@bevwill.com.au

03 5662 2630

■ Sale

sale@bevwill.com.au

03 5144 3877

■ Traralgon

traralgon@bevwill.com.au

03 5176 0374

■ Warragul

warragul@bevwill.com.au

03 5623 2257

■ Wonthaggi

wonthaggi@bevwill.com.au

03 5672 1505

### NSW

■ Sydney

(including Clouston Associates)

sydney@bevwill.com.au

02 9283 6677

sydney@clouston.com.au

02 8272 4999

■ Central Coast

centralcoast@bevwill.com.au

02 4351 2233

■ Newcastle (Barr Planning)

newcastle@bevwill.com.au

02 4037 2451

■ Western Sydney

westernsydney@bevwill.com.au

02 4625 5055

■ Wollongong

wollongong@bevwill.com.au

### NORTHERN TERRITORY

■ Darwin: (Clouston Associates)

darwin@clouston.com.au

08 8941 2450